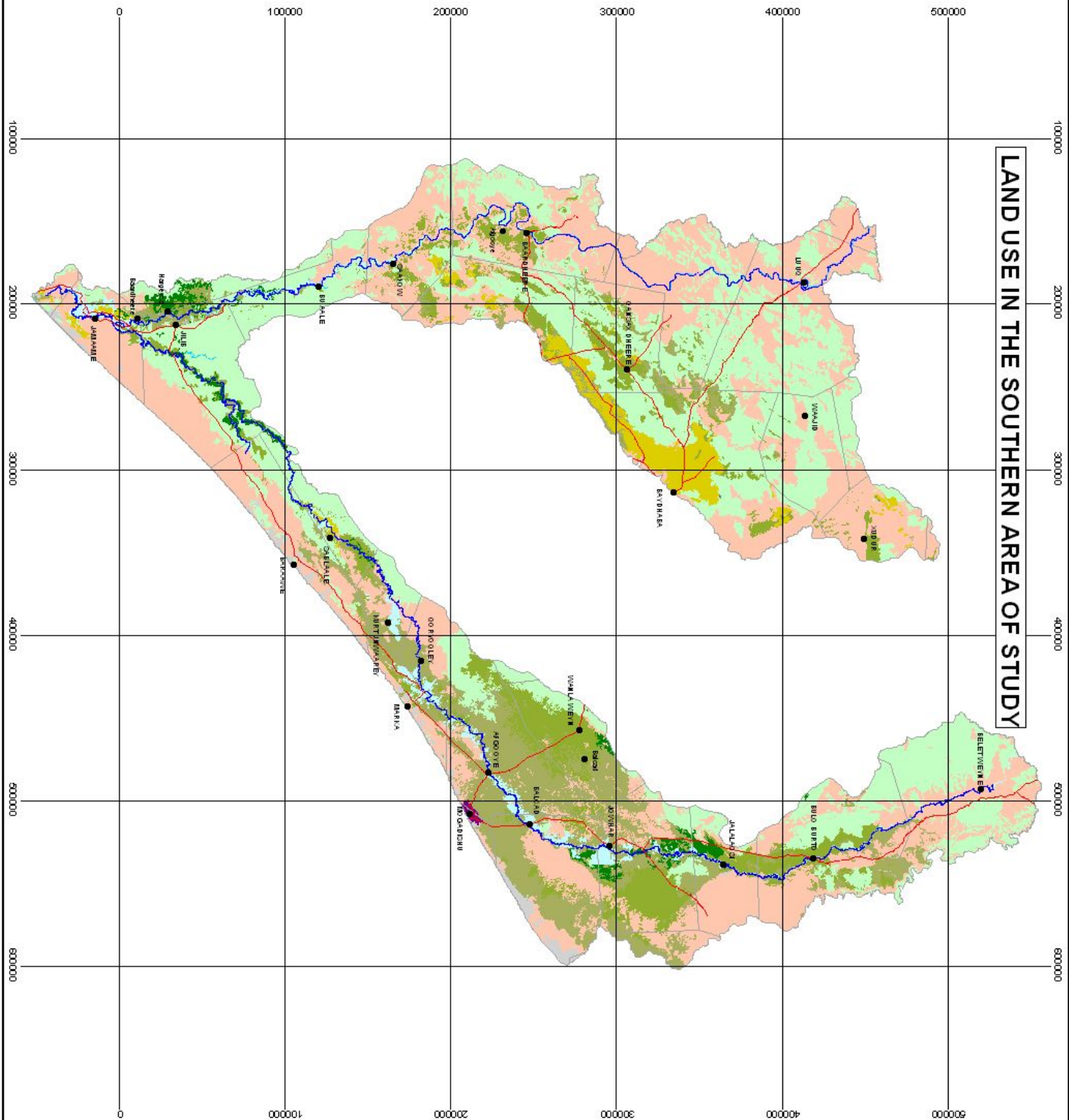


LAND USE IN THE SOUTHERN AREA OF STUDY



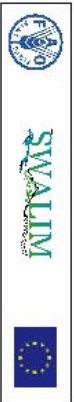
Land Use Classes in the Juba and Shabelle Riverine Areas of Study

- R : Rainfed Agriculture
- RT : Rainfed Agriculture /Transhumance Pastoralism
- TR : Transhumance Pastoralism /Rainfed Agriculture
- TWR: Transhumance Pastoralism/Wood Collection/Rainfed Agriculture
- I: Irrigated Agriculture
- TI: Transhumance Pastoralism /Irrigated Agriculture
- TP: Transhumance Pastoralism
- TW : Transhumance Pastoralism /Wood Collection
- U: Built Up Areas
- RST: Rural Settlement
- BL: Bare Lands
- W: Water Body

- TOWN
- Road
- River
- Districts boundary



Map Projection UTM Zone 38 N
Datum WGS 84



SCALE 1 : 2 250 000



Map Reference: LAND USE-20070522-S-AOI-A3-001
For copies of digital data please contact enquiries@faoswalim.org