

SOIL MAP OF THE FARJANO SETTLEMENT PROJECT

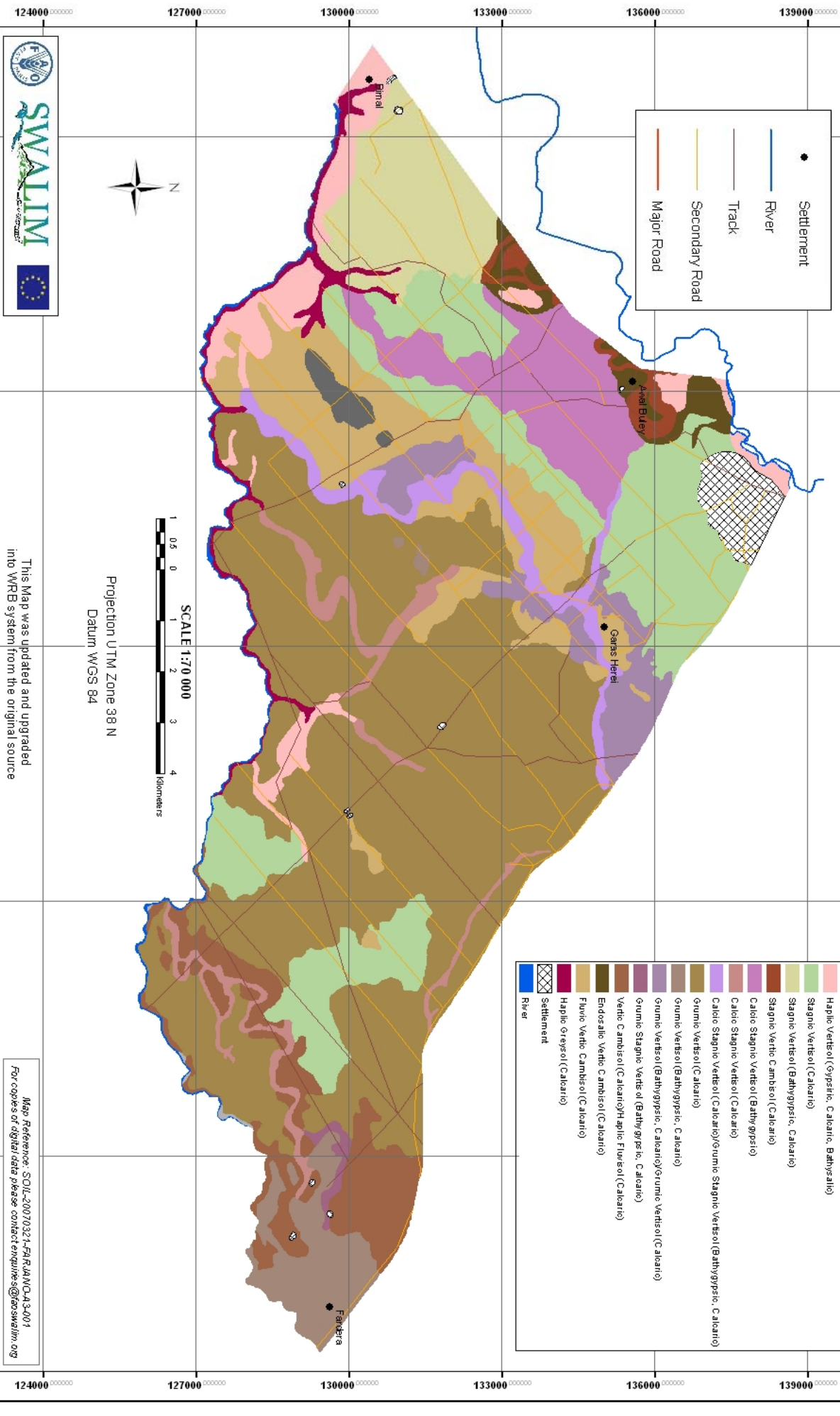
360000

365000

370000

375000

380000



•	Settlement
— (blue)	River
— (grey)	Track
— (yellow)	Secondary Road
— (red)	Major Road

Soil Classes

Grey	Haplic Fluvisol (C Alcalino)
Dark Grey	Haplic Fluvisol (Bathy-calcaric, Aridic)
Light Grey	Haplic Vertisol (Gypsic, Calcaric, Bathy-calcaric)
Light Green	Stagnic Vertisol (Calcaric)
Green	Stagnic Vertisol (Bathy-gypsic, Calcaric)
Light Yellow	Stagnic Vertic Cambisol (Calcaric)
Yellow	Calcic Stagnic Vertisol (Bathy-gypsic)
Orange	Calcic Stagnic Vertisol (Calcaric)
Light Purple	Calcic Stagnic Vertisol (Calcaric)/Gummic Stagnic Vertisol (Bathy-gypsic, Calcaric)
Light Brown	Gummic Vertisol (C Alcaric)
Medium Brown	Gummic Vertisol (Bathy-gypsic, Calcaric)
Dark Brown	Gummic Vertisol (Bathy-gypsic, Calcaric)/Gummic Vertisol (C Alcaric)
Very Dark Brown	Gummic Stagnic Vertic (Bathy-gypsic, Calcaric)
Black	Vertic Cambisol (Calcaric)/Haplic Fluvisol (Calcaric)
Dark Purple	Endosalic Vertic Cambisol (C Alcaric)
Light Purple	Fluvisol Vertic Cambisol (C Alcaric)
Dark Purple	Haplic Gleysol (Calcaric)
Blue	River
White with grid	Settlement

This Map was updated and upgraded into WRB system from the original source

Map Reference: SOIL-20070327-FARJANO-A3-001
For copies of digital data please contact enquiries@swalim.org

